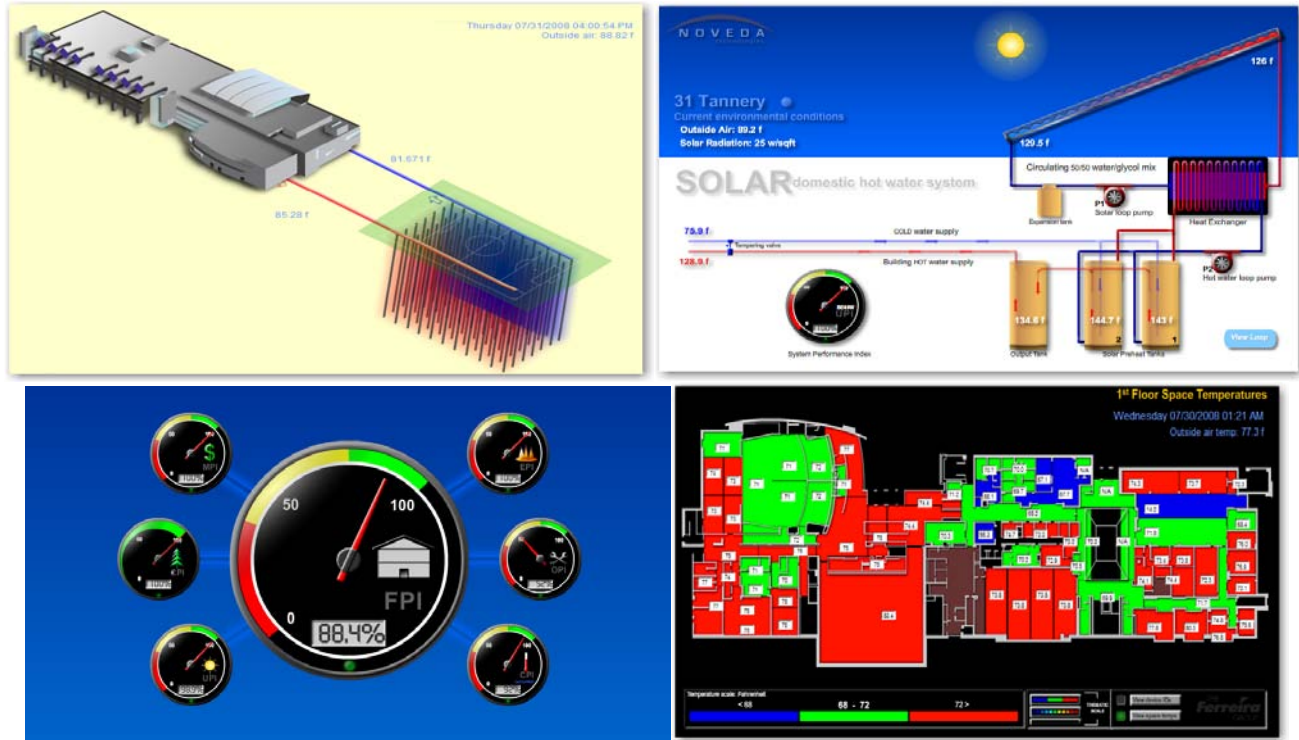


# NOVEDA™ Facilimetrix™



Copyright 2008 © Noveda Technologies. US and International Patents Pending

Noveda's real-time web-based Facilimetrix™ combines the power of our EnergyFlow Monitor™ and your facility's existing building control systems to provide context and communicate your building's energy and natural resource use in conjunction with where the resources are being used in order to effect change.

With custom designed visuals that incorporate your building's performance data in real-time, Facilimetrix™ presents your buildings performance as no other product can. With meaningful graphics, analysis based alerts, detailed reporting and complete data export flexibility, Facilimetrix™ gives you the answers, not just the details.

### ***Making the world greener, one building at a time.***

Dynamic visualizations not only inform those around you about your building's performance, but engage them in helping you achieve your goals for energy and resource efficiency. Easily and instantly track the before and after effects of energy conservation efforts, track set-point performance, monitor air flow, coolant flow and system performance and even track filter status.

- Maximize building performance and efficiency through real-time monitoring down to ten second intervals
- Provide real time information about temperature set points, over-rides versus actual readings
- Real-time alerts via email and sms text messages regarding system and component performance
- Integrates with all existing building control systems
- Graphics based on actual floor plans
- Monitor performance against targets, industry standards and other buildings with similar systems
- Historical data storage and reporting of resource consumption, weather, and other critical elements
- Download data into several formats for more advanced analysis and reporting
- Anytime, anywhere access via web-enabled mobile devices